


BROOKS



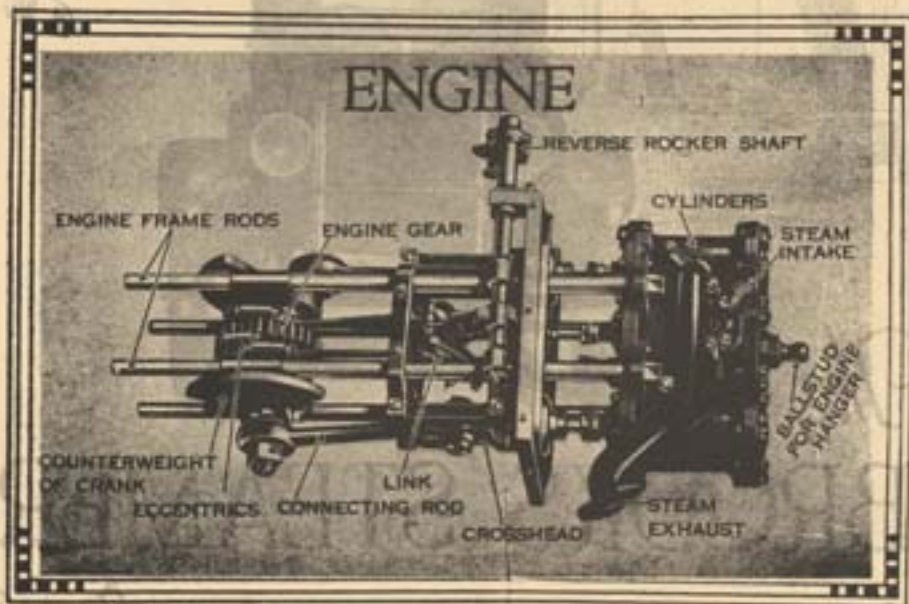
The
BROOKS STEAMER

Pre-eminent among fine Cars 

The BROOKS STEAMER

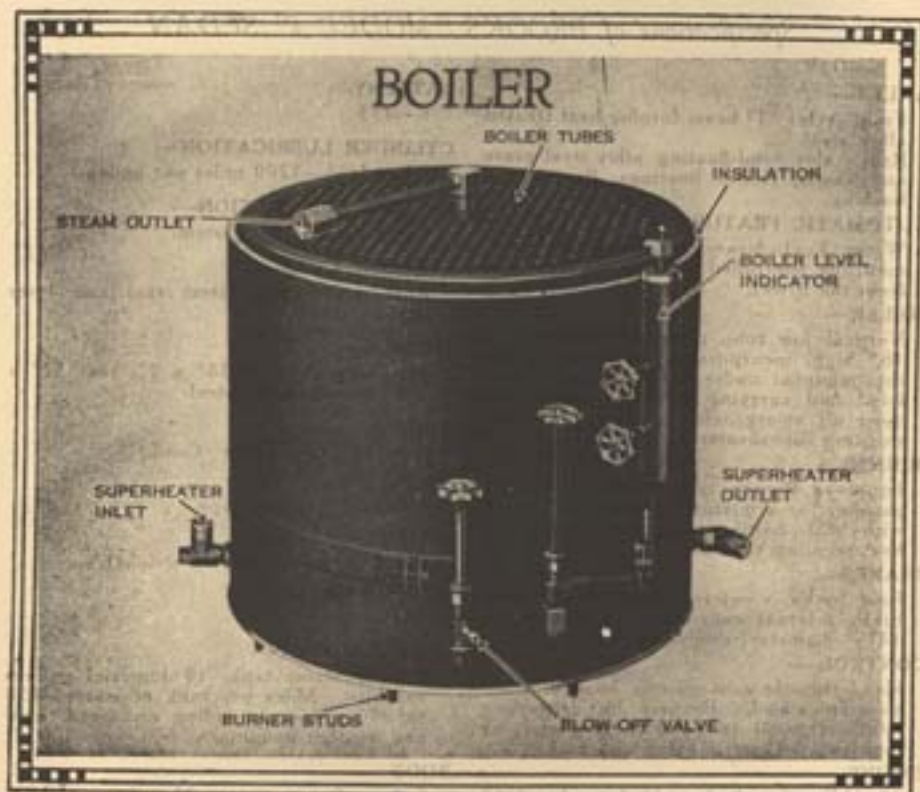
WHERE automobile values are known and recognized the BROOKS STEAMER is proving the year's outstanding automotive sensation. Its merits have compelled the spontaneous recognition of the entire industry, and, over night, that keenest of all judges and critics, Competition, has conceded BROOKS STEAMER leadership.

From one end of the country to the other BROOKS STEAMER exhibits are the focus point. Since May last hundreds of thousands of people have crowded and jammed our display places and it has been this very unusual public attention, this unprecedented interest, that has enabled the BROOKS STEAMER to win a real and quick national acceptance. In one great leap BROOKS STEAMER takes the lead. It has eclipsed the market, silenced competition, created a class of its own. At no other time in the history of the industry has a new car been accorded a reception like the



Simple, two cylinder, double acting, slide valve, in unit with rear axle.





Drum shape, fire tube type, possessing very fast steaming qualities and mounted as a rigid unit in the frame.

BROOKS STEAMER has received. At no other time have new dealers been so rapidly attracted to an automobile, and this is all credited to the performance of this new **GENTLE GIANT OF MOTION**, a performance that is nothing short of startling.

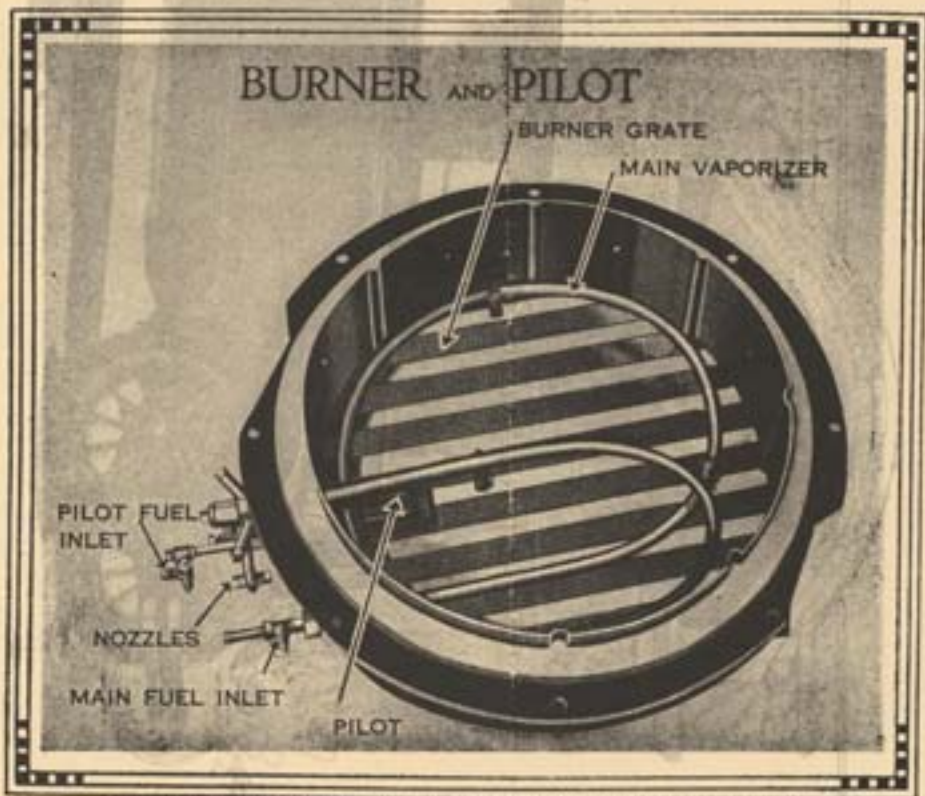
Women motorists who invariably grasp the wheel as rigidly as the arm of a dentist's chair now relax, and take it easy when they drive a **BROOKS STEAMER**. The amazing simplified control inspires a new confidence, a new trust, a new assurance. That is why women buyers demand the **BROOKS STEAMER** in cities where traffic is congested.

The **BROOKS STEAMER** is the most admired car on the road. Owners say they are swamped with questions, and as they drive along the highway other motorists come speeding up to get a peep at the car, for its appeal is universal and arouses the envy of every one awheel.

From head lamps to tail light here is a car with outstanding features, with new ideas and style, ample power at all speeds, no vibration, simplicity of control, no troublesome gear shifting. Then there is the great steam engine, that GENTLE GIANT OF MOTION, with its vibrationless effort and developing an acceleration that is quick and positive, and all done by the touch of the finger.

Nothing succeeds like success. The BROOKS STEAMER is a success, in design, in engineering, in performance, in economy and in service, and BROOKS STEAMER owners are proving it—proving it to the satisfaction of thousands of motor car prospects who to-day or tomorrow are joining the ever increasing army of BROOKS STEAMER owners.

*"This, at last, is
The Car Supreme"*



Vaporizing type burner and improved pilot electrically pre-heated.



Specifications of BROOKS "MODEL 2" SEDAN

AXLES—

Front Axle: "I" beam forging heat treated alloy steel.

Rear Axle: Semi-floating, alloy steel gears and shafts, Roller Bearings, Banjo type housing.

AUTOMATIC FEATURES—

Water, Fuel, Steam and Burner all automatically controlled without any attention from the driver.

BOILER—

Vertical fire tube type, 22" diameter x 16" high, incorporating sediment collector; mounted under hood, properly insulated and carrying sufficient reserve to meet all emergencies. Fitted with heat resisting superheater.

BURNER—

Improved Bunsen type, burning coal oil, gasoline, or a mixture of the two. Lined with heat-resisting metal and fitted with heat-resisting vaporizer.

BRAKES—

Foot brake is external contracting; hand brake internal expanding. Brake drums 14½" diameter; easily adjusted.

CONTROL—

Hand throttle conveniently located below steering wheel. Reverse by depressing left foot pedal (no clutch, gear shift or ignition). Throttle fitted with lock.

ENGINE—

18 H.P.; 2 cylinder, 4" bore by 4½" stroke, double acting, simple, with detachable heads, geared direct to rear axle. Stevenson valve gear operates plain slide valves. Crankshaft, main bearings, eccentric straps and connecting rods are mounted on ball or roller bearings. Moving parts submerged in bath of oil, covered by removable aluminum case. Brooks design throughout. This engine gives four steady power impulses per revolution; an equivalent number of power impulses to that of an eight cylinder internal combustion engine.

FUEL SUPPLY—

Combination main tank and pilot tank mounted at rear. Twelve to sixteen miles per gallon fuel consumption.

GENERATOR—

Geared directly to rear axle drive gear, supplying current for lamps and horn.

BATTERY—

6—135.

CYLINDER LUBRICATION—

Force feed—1200 miles per gallon.

CHASSIS LUBRICATION—

Force Feed—Dott system.

STEERING GEAR—

Ross irreversible, latest cam and lever design.

SPRINGS—

Semi-elliptic; front 38" x 2", rear 57" x 2¼"; special alloy steel.

TIRES—

32 x 4½ "Goodyear" Cord.

WHEELS—

Standard Artillery type.

WEIGHT—

3,800 pounds (shipping weight).

WHEELBASE—

122 inches.

WATER SUPPLY—

Copper water tank, 19 Imperial gallons capacity. Miles per tank of water—150 to 250 miles, depending on speed, road and weather conditions.

BODY—

Sedan—5 passenger, Meritas fabric, Brooks design; of very pleasing lines and incorporating the latest body features.

UPHOLSTERING—

Selection of finest broadcloths and mohairs.

BODY COLOR—

Black with polished aluminum mouldings.

EQUIPMENT—

Complete set of Tools.
Spare Rim.
Spare Tire and Tube.
Tire Cover.
Front Bumper.
Rear Bumperettes.
Rear Vision Mirror.
Dome Light.
Electric Windshield Wiper—Tandem type.
Rebound Controllers (set of four).

BROOKS STEAM MOTORS LIMITED

Factory at STRATFORD, Ontario

Factory Branches:—TORONTO, King and York Sts. MONTREAL, 708 St. Catherine St. W.
OTTAWA, 394 Bank St.





FIVE PASSENGER SEDAN MODEL

List Price - \$3565. P.O.B.
Stratford, Ontario, all taxes paid

