



THE LOCO SURREY, illustrated above, is one of our 1903 *Steam* models,—a fine family car for city or country use. IMPROVEMENTS: Steam, Water, and Air Pumps; Klinger Gauge; Pilot Light; very large Water and Fuel Tanks; Superheated Steam; enlarged Boiler; two sets independent brakes; many other attractive improvements. We are the pioneer builders of steam cars in this country, and have placed 5,000 Locomobiles in the hands of customers. Our experience, therefore, is unequalled, and our cars are the best. Write for new booklets.

The *Locomobile* Company of America, 7 E. 42d Street, New York

Branches: BOSTON, PHILADELPHIA, CHICAGO, BRIDGEPORT, CONN., LONDON, PARIS

# “Locomobile”



The 12-H. P. Locomobile (FOUR CYLINDERS)

ONE of our new models is the powerful and substantial gasoline touring car shown above. It has front vertical engine with many novel features, and is so designed that all parts are readily accessible. The car is fast, climbs hills remarkably, and runs as smoothly and quietly as any of our steam locomobiles. Place your order now for spring delivery.

One of our steam cars, the \$1200 Loco-Surrey, is the best four-passenger Auto on the market for the price. It is attractive and satisfactory in every detail. Here are some of the features: Three-inch tires, Overman pumps, large radius of action, Klinger gauge, Pilot light, strongly constructed throughout, working parts incased.

*Write for full information about the many styles of automobiles which we manufacture.*

**The Locomobile Co. & STEAM & GASOLINE**  
7 EAST 42d STREET, N. Y.

**BRANCH  
OFFICES**

NEW YORK REPOSITORY, Broadway, corner of 76th Street  
CHICAGO, 1524 Michigan Avenue  
BOSTON, 222 Bay State Street  
PHILADELPHIA, 249 N. Broad Street  
SAN FRANCISCO, 1622 Market Street (The Locomobile Company of the Pacific)  
LONDON, 23 Nassau Place, No. Kensington  
BIRMINGHAM, COV. Our factory is located here

SEE OUR EXHIBIT AT AUTOMOBILE SHOW, N. Y., JANUARY 17TH TO 24TH

# *Locomobile*

## S T E A M C A R S

### **Floyd Clymer's Historical MOTOR SCRAPBOOK . . . \$1.50**

New! Just out . . . 148 pages. Descriptions, illustrations, advertising over 250 early Motorcycles and Automobiles. Read about Pierce "4," Steam Motorcycle, Reading, Merkel, Excelsior, Thor, Thomas, Marsh-Metz, others . . . see interesting, educational, surprising descriptions, illustrations CHEVROLET V-8 revolving engine car, friction driven Plymouth, Steamers, Electrics, foreign cars . . . a sensational book of great interest . . . ONLY \$1.50 postpaid. *Order from*

**FLOYD CLYMER**

2125 West Pico Street, Los Angeles 6, Calif.

*Member Association of  
Licensed Automobile Manufacturers*

**O**UR 1903 Locomobiles are the result of many years of study and manufacture. Since 1899 we have placed 5000 Locomobiles in the hands of customers and have constantly studied the performances of these cars over all kinds of roads and under all conditions. No other automobile company has had such experience for improving their output. We have followed up all these opportunities, and the Locomobiles which we are delivering this year have been brought to a high state of perfection. As the pioneer builders of steam cars, we started manufacturing at Newton, Mass., and in a short time had five large plants in New England. These are now all combined in one immense establishment at Bridgeport, Conn., the most modern, and the most complete, automobile plant in this country.

# Steam Catalogs and Pamphlets

## FOR COLLECTORS OF HISTORICAL AUTOMOTIVE DATA

### BAKER STEAM CAR BOILER

Many steam engineers think the Baker Boiler was the best of them all. This leaflet describes, illustrates and gives full details of boiler used in Baker Steamer. No. 85-1.....\$0c

### BROOKS STEAM CAR

This reprint folder gives complete data, specifications on this famous steamer. Car is illustrated and cutaway of chassis shown. No. BR-1.....\$0c

### DELLING STEAM CAR

Fine illustrations of two pleasure cars. Specifications of the Boiler Assembly with photo, three-cylinder engine illustrated with complete enclosure and operating lever. Chassis illustrated. Specifications and features of this attractive steamer included in folder. No. DS1.....\$0c

### DOBLE STEAMER

Photos last Dobles built. Limousine, Phaeton, Runabout, De Luxe and standard models. Beautiful illustrations bodies, top and side view chassis engine, generator, condensers; specifications of body design, chassis, equipment. Unique interesting booklet. DO5-1.....\$1.00

### STANLEY STEAMER

All 1908 stock models illustrated, specifications. Beautiful photo of 127 MILE AN HOUR World's record-breaking Stanley (the fastest car in the world). Lists Stanley records, various distances and former records, description of race cars and attractive, instructive folder. No. SS-2.....\$1.00

### STANLEY STEAMER

Questions and Answers folder about the latest Stanley data available. Questions about steamer vs. gas cars... answered by Steam expert. Secure a real insight to Steamer qualifications and limitations by reading this interesting historical folder. No. SS-1.....\$1.00

### STANLEY STEAMER

All 1913 models listed, illustrated, described with specifications and beautiful cutaway photos of boiler, burner, engine, cylinders, differential, steering mechanism, pump, axle, bearings. Photos nine models including pleasure, mountain car and delivery wagon. No. SS-3.....\$1.00

### STANLEY STEAMER

1917 models. By this fine Stanley produced a car much in appearance the same as gas cars of that year. Eight models illustrated, complete specifications, engine, cylinder, boiler, differential, with illustrations. Folder contains history of the Stanley Motor Carriage Company. No. SS-4.....\$1.00

### STANLEY STEAMER INSTRUCTION BOOK

One of the latest books published by Stanley. Complete data, instructions, information on care and operation of Stanley Steamers. Diagrams, charts, drawings. Valuable booklet for anyone interested in steam. No. SS-5.....\$1.00

### STANLEY STEAMER INSTRUCTION BOOK

Non-Condenser Models. Full instructions with charts and drawings for operation of all earlier models having no condenser. No. SS-6.....\$1.00

### WHITE STEAMER

1908 models. Complete specifications, photos, drawings, engine, chassis, generator. Interesting reading of this historical and famous American Steam Car. No. WS-1.....\$1.00

### WHITE STEAMER

1910 models... Photos of five cars, two chassis with complete details of construction, specifications and other data. Models "O-O" and "M-M". Beautiful photos of individual parts such as crankshaft, pistons, valves, bearings, counter-weight, pump, rocker arms. Left side, right side, rear view of engine. Diagrams and photos of generator. An attractive folder of this historical Steam Car. No. WS-2.....\$1.00

### WHITE STEAM CAR BULLETIN

This 1903 edition of the White Steamer booklet gives details of races, hillclimbs, photos and illustrations of early White Steamers with and without tops or windshield, and testimonial letters of unusual claims of White owners. Here is a booklet every steam car fan will enjoy.....\$1.00

**O**UR 1903 Locomobiles are the result of many years of study and manufacture. Since 1899 we have placed 5000 Locomobiles in the hands of customers and have constantly studied the performances of these cars over all kinds of roads and under all conditions. No other automobile company has had such experience for improving their output. We have followed up all these opportunities, and the Locomobiles which we are delivering this year have been brought to a high state of perfection. As the pioneer builders of steam cars, we started manufacturing at Newton, Mass., and in a short time had five large plants in New England. These are now all combined in one immense establishment at Bridgeport, Conn., the most modern, and the most complete, automobile plant in this country.

# Locomobile

# S T E A M C A R S

# Locomobile



The 12 H. P. Locomobile (Four Cylinders)

ONE of our new models is the powerful and substantial gasoline touring car shown above. It has front vertical engine with many novel features, and is so designed that all parts are readily accessible. The car is fast, climbs hills remarkably, and runs as smoothly and quietly as any of our steam locomobiles. Place your order now for spring delivery.

One of our steam cars, the \$1200 Loco-Surrey, is the best four-passenger Auto on the market for the price. It is attractive and satisfactory in every detail. Here are some of the features. Three-inch tires, Overman pumps, large radius of action, Klinger gauge, Pilot light, strongly constructed throughout, working parts encased.

*Write for full information about the many styles of automobiles which we manufacture*

The *Locomobile* Co. STEAM GASOLINE  
7 EAST 42d STREET, N. Y.

BRANCH  
OFFICES

NEW YORK REPOSITORY, Broadway, corner of 76th Street  
CHICAGO, 2354 Michigan Avenue  
BOSTON, 332 Baylston Street  
PHILADELPHIA, 449 N. Broad Street  
SAN FRANCISCO, 1202 Market Street (The Locomobile Company of the Pacific)  
LONDON, 39 Sussex Place, So. Kensington  
BRIDGEPORT, CONN. Our factory is located here

SEE OUR EXHIBIT AT AUTOMOBILE SHOW, NEW YORK, JANUARY 17TH TO 24TH



The LOCOSURREY illustrated above is one of our 1903 Steam Models. A fine family car for city or country use. **Improvements:**—Steam, Water and Air Pumps; Klinger Gauge; Pilot Light; very large Water and Fuel Tanks; Superheated Steam; Enlarged Boiler; Two Sets Independent Brakes—many other attractive improvements. We are the pioneer builders of steam cars in this country and have placed 5000 Locomobiles in the hands of customers. Our experience, therefore, is unequalled, and our cars are the best. Write for new booklets.

The *Locomobile* Company of America, Bridgeport, Conn.

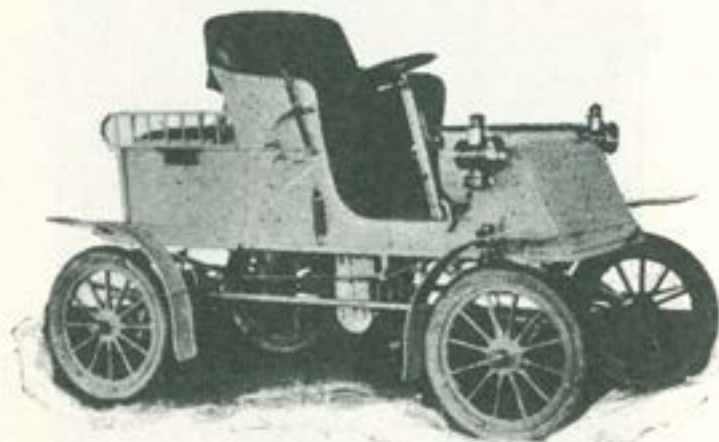
Branches: New York, Boston, Philadelphia, Chicago, London, Paris.

# Steam Vehicles

1903

## Locomobile Steam Cars

Locomobiles are made by Locomobile Company of America, Bridgeport, Conn. (See also gasoline cars.)



THE LOCOMOBILE DOS-A-DOS WITH DISAPPEARING SEAT.

Sixteen-inch boiler and burner, mounted on steel frame; Klinger gauge; generator and Pilot light; new 3x4 Locomobile engine, encased and using superheated steam; Octopus lubricator; steam water and air pumps; 33 gallons of water, 10 gallons of gasoline; artillery wheels with 3x28-inch double tube tires; 2 band brakes on differential; 2 band brakes on rear hubs with ratchet; roller-bearing rear axles; wheel steer; automatic cylinder oil pump; mud guards. Seats four. Price \$1600.

single tube tires; steel wheels; band brake on differential; band brakes on rear hubs with ratchet; roller-bearing rear axles; mud guards. Seats four. Price \$1200; also made heavier for touring.



LOCOMOBILE RUNABOUT.

Box front; 16-inch boiler and burner; Klinger gauge; generator and Pilot light; 2½x3½ Locomobile engine, encased and using superheated steam; Octopus lubricator; steam water and air pumps; 14 gallons of gasoline, 30 gallons of water; 2½x28-inch tires; heavy steel wheels; roller-bearing rear axles; mud guards; automatic cylinder oil pump. Seats two. Price \$950.

THE COSMOPOLITAN.



*The Locomobile is the best automobile*

*Above is shown the 1907 Stanhope "B" (Steam), a desirable touring car.*

IMPROVEMENTS: Enlarged boiler; indestructible water gauge; 10 H. P. engine, encased and using superheated steam; four band brakes; Victor Steam Pumps. Write for full details. We also manufacture gasoline cars.

**Our new gasoline Locomobile is "Easily the best built car in America."**

**The Locomobile Company's Executive Headquarters Removed to factory, Bridgeport, Conn.**

BRANCHES: 72th Street and Broadway, New York; 13 Berkeley Street, Boston; 240 N. Broad Street, Philadelphia;  
1354 Michigan Avenue, Chicago; 39 Sussex Pl., So. Kensington, London.



THE COSMOPOLITAN.



*The Locomobile is the best automobile*

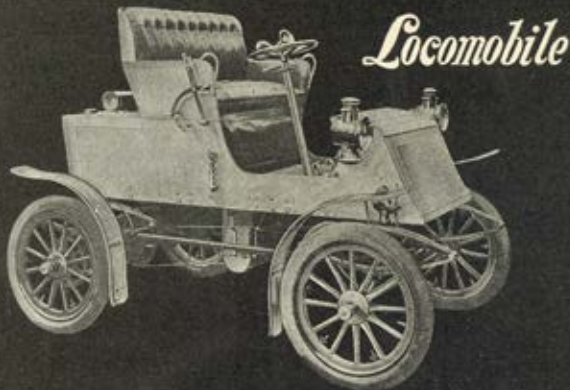
*Above is shown the 1903 Stanhope "B" (Steam), a desirable touring car.*

IMPROVEMENTS: Enlarged boiler; indestructible water gauge; 10 H. P. engine, encased and using superheated steam; four band brakes; Victor Steam Pumps. Write for full details. We also manufacture gasoline cars.

**Our new gasoline Locomobile is "Easily the best built car in America."**

**The Locomobile Company's Executive Headquarters Removed to factory, Bridgeport, Conn.**

BRANCHES: 76th Street and Broadway, New York; 13 Berkeley Street, Boston; 249 N. Broad Street, Philadelphia;  
1354 Michigan Avenue, Chicago; 39 Sussex Pl., So. Kensington, London.



*The Locomobile is the best automobile*

*Above is shown the 1903 Standup "B" (Steam), a desirable touring car.*

IMPROVEMENTS: Enlarged boiler; indestructible water gauge; 30 H. P. engine, encased and using superheated steam; four band brakes; Victor Steam Pumps. Write for full details. We also manufacture gasoline cars.

Our new gasoline Locomobile is "Easily the best built car in America."

The **Locomobile** Company's Executive Headquarters Removed to factory, Bridgeport, Conn.

BRANCHES: 76th Street and Broadway, New York; 11 Berkeley Street, Boston; 240 N. Broad Street, Philadelphia;  
1154 Michigan Avenue, Chicago; 39 Sussex Place, South Kensington, London.

The

"Steam"  
Autos

# Locomobile

"Gasoline"  
Autos

Co. of America

7 East 42d Street, New York

## OUR STEAM CARS FOR 1903

are the result of three years unequalled experience, for in this time we have placed 5,000 steam Locomobiles in the hands of customers. Strong and durable construction combined with all the latest attachments and labor-saving devices. Many styles—Runabouts, Surreys, Tonneaus, etc. Prices from \$650 upwards.

In writing specify if you are an old Locomobile owner



---

## OUR GASOLINE TOURING CARS

are easily the best built in America. We are building both 9 H. P. and 16 H. P. cars, and use the front vertical type of motor exclusively. Our enormous plant at Bridgeport, Conn., enables us to make early Spring deliveries.

**FEATURES:** Throttle on steering wheel giving all speeds on high gear. Valves can be removed and replaced in two minutes. Ignition by dynamo with automatic switch for charging batteries. Absolutely silent engine, remarkable hill-climbing powers. Ask your "mechanical friend" to look it over. All steel chassis allows purchaser to order any desired style of body.

Booklet on request.



16 H. P. Tonneau de Luxe

**P**RINCE HENRY of Prussia, uses a Locomobile Steam Car. So do thousands of other people. Our models for this year are most desirable, being the result of four years' intelligent manufacture, in which time we have produced and sold five thousand machines. The Runabout herein illustrated will run long distances without having to stop for fuel and water. Very fast and smooth riding—unequalled for ease of control and hill climbing.



**CONVENIENCES AND SPECIAL FEATURES.**—Indestructible water gauge;

Victor steam air pump, obviating all hand pumping and very useful for inflating tires; Victor steam water pump, a reliable auxiliary boiler feed; ejector for convenience in touring; thorough lubrication of engine from one central oil reservoir; positive automatic oil pump for cylinders; forced draught for use in windy weather; super-heated steam; solid and substantial construction; fine workmanship and handsome finish throughout.

PRICES FROM \$650 UPWARDS. WRITE FOR CATALOGS AND INFORMATION,  
OR VISIT NEAREST BRANCH OFFICE FOR ROAD TRIAL.

The *Locomobile* Company of America, Head Offices & Factory, Bridgeport, Conn.

BRANCHES: 175th St. & Broadway, NEW YORK; 13 Berkeley St., BOSTON; 149 N. Broad St., PHILADELPHIA;  
1234 Michigan Ave., CHICAGO; 29 Sussex Place, South Kensington, LONDON.

## Our Steam Cars

for 1903 are the result of over four years' manufacture, in which time we have made and sold five thousand vehicles. The Locomobile steam car is comfortable and convenient and has won many prizes for speed, reliability, and hill climbing, in all parts of the world. A customer writes, "I am the owner of one of your earliest steam machines, No. 7 (built in 1890), which still gives good satisfaction."

**Merrick Road Race, April, 1900**—Auspices Automobile Club of America.—The Locomobile establishes 25-mile Road Record for America.

**The 1,000-Mile Trial, May, 1900**.—Auspices Automobile Club of Great Britain.—The Locomobile wins two prizes.

**Paris Exposition, 1900**.—The Locomobile awarded two medals.

**Exelberg Hill Climbing Contest, June, 1901**.—Auspices Austrian Automobile Club.—The Locomobile wins first place and first prize.

**Pike's Peak**.—Summit reached by Locomobile, August, 1901.—The most remarkable feat ever accomplished by an automobile.

**500 Mile Endurance Run, New York to Buffalo**.—Auspices Automobile Club of America, Sept., 1901.—Locomobile wins First-class Certificate.

**Glasgow Reliability Trials, 535 Miles**.—Auspices Automobile Club of Great Britain, October, 1901.—Locomobile awarded gold medal—highest award.

**Pan-American Exposition, October, 1901**.—Gold Medal awarded The Locomobile Company.

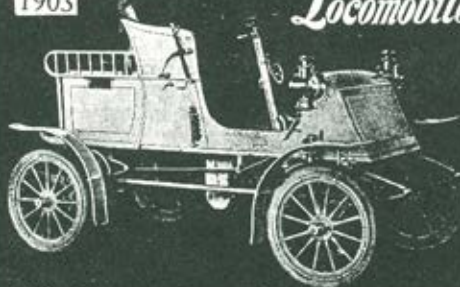
**Speed Trials, Coney Island Boulevard, November, 1901**.—The Locomobile wins the Gold Medal in its class.

**Eagle Rock Hill Climbing Contest, November, 1901**.—Auspices, N. J. Automobile Club.—Open Competition. Locomobile makes best time, wins first prize.

**Roslyn Hill Contest, April, 1902**.—The Locomobile wins Class "A" Cup.

1903

Locomobile



*The Locomobile is the best automobile*

Prices from **\$650** upwards

The Dos-a-Dos herein illustrated is only one of the many sensible and handsome styles.

Write for catalogue or visit any branch office for demonstration on the road.

*The Locomobile Company of America*

General Offices and Factory · Bridgeport, Conn.

BRANCHES

NEW YORK—Broadway, corner 76th Street.  
BOSTON—15 Berkeley Street.  
PHILADELPHIA—249 North Broad Street.  
CHICAGO—1354 Michigan Avenue.  
LONDON—39 Sussex Place, South Kensington.  
PARIS—32 Avenue de la Grande-Armée.

## Conveniences, Special Features

Indestructible water gauge; Victor steam air pump, obviating all hand pumping and very useful for inflating tires; Victor steam water pump, a reliable auxiliary boiler feed; ejector for convenience in touring; thorough lubrication of engine from one central oil reservoir; positive automatic oil pump for cylinders; forced draught for use in windy weather; superheated steam; solid and substantial construction; fine workmanship and handsome finish throughout.

**Liverpool Exhibition, May, 1902**.—The Locomobile awarded medal.

**Paris-Nice 600 Miles Caravan, May, 1902**.—Locomobile finished third, being preceded only by two cars of greatly superior power.

**Box Hill Speed Trials**.—Locomobile wins medal.  
**100 Miles Run, New York to Bridgeport**.—Auspices Automobile Club of America.—Locomobile wins three Non-stop Certificates, 100% Records.

**Staten Island Speed Trials, May, 1902**.—Auspices Automobile Club of America.—Locomobile breaks World's Record, 1 mile, for steam cars. Gold medal.

**Chicago Auto. Club, 100-Mile Test, August, 1902**.—Locomobile wins Non-stop Certificate, 100% Record.

**650-Mile Reliability Trials**.—Auspices Automobile Club of Great Britain, Sept., 1902.—Two Locomobiles won Gold Medals, highest award. Only American car to receive this honor.

**New York-Boston Reliability Run**.—Auspices Automobile Club of America.—Four Locomobiles receive First-class Certificates.

**Anniversary Run, October, 1902**.—Auspices Automobile Club of Great Britain.—The Locomobile only American steam car to win Non-stop Certificate.

**Eagle Rock Hill, 1902 Contest**.—Open to all.—Again Locomobile makes fastest time and wins first prize.

THE COSMOPOLITAN.



*The Locomobile is the best automobile*

*Above is shown the 1903 Stanhope "B" (Steam), a desirable touring car.*

IMPROVEMENTS: Enlarged boiler; indestructible water gauge; 10 H. P. engine, encased and using superheated steam; four band brakes; Victor Steam Pumps. Write for full details. We also manufacture gasoline cars.

**Our new gasoline Locomobile is "Easily the best built car in America."**

**The Locomobile Company's Executive Headquarters Removed to factory, Bridgeport, Conn.**

BRANCHES: 76th Street and Broadway, New York; 13 Berkeley Street, Boston; 219 N. Broad Street, Philadelphia; 1354 Michigan Avenue, Chicago; 39 Sussex Pl., So. Kensington, London.

THE COSMOPOLITAN.



*The Locomobile is the best automobile*

*Above is shown the 1903 Stanhope "B" (Steam), a desirable touring car.*

IMPROVEMENTS: Enlarged boiler; indestructible water gauge; 10 H. P. engine, encased and using superheated steam; four band brakes; Victor Steam Pumps. Write for full details. We also manufacture gasolene cars.

**Our new gasolene Locomobile is "Easily the best built car in America."**

**The Locomobile Company's Executive Headquarters Removed to factory, Bridgeport, Conn.**

BRANCHES: 76th Street and Broadway, New York; 13 Berkeley Street, Boston; 249 N. Broad Street, Philadelphia;  
1354 Michigan Avenue, Chicago; 39 Sussex Pl., So. Kensington, London.

# Locomobile



The 12 H. P. Locomobile (FOUR CYLINDERS)

ONE of our new models is the powerful and substantial gasoline touring car shown above. It has front vertical engine with many novel features, and is so designed that all parts are readily accessible. The car is fast, climbs hills remarkably, and runs as smoothly and quietly as any of our steam locomobiles. Place your order now for spring delivery.

One of our steam cars, the \$1200 Loco-Surrey, is the best four-passenger Auto on the market for the price. It is attractive and satisfactory in every detail. Here are some of the features. Three-inch tires, Overman pumps, large radius of action, Klinger gauge, Pilot light, strongly constructed throughout, working parts encased.

*Write for full information about the many styles of automobiles which we manufacture*

The *Locomobile* Co. ✧ STEAM ✧ GASOLINE  
7 EAST 42d STREET, N. Y.

BRANCH  
OFFICES

{ NEW YORK REPOSITORY, Broadway, corner of 26th Street  
CHICAGO, 1824 Michigan Avenue  
DETROIT, 12 Boscawen Street  
PHILADELPHIA, 245 N. Broad Street  
SAN FRANCISCO, 1622 Market Street (The Locomobile Company of the Pacific)  
LONDON, 23 Essex Street, E.C.2  
BRIDGEPORT, CONN. Our factory is located here

SEE OUR EXHIBIT AT AUTOMOBILE SHOW, N. Y., JANUARY 17TH TO 24TH



# Locomobile



The 12 H. P. Locomobile (FOUR CYLINDERS)

**O**NE of our new models is the powerful and substantial gasoline touring car shown above. It has front vertical engine with many novel features, and is so designed that all parts are readily accessible. The car is fast, climbs hills remarkably, and runs as smoothly and quietly as any of our steam Locomobiles. Place your order now for spring delivery.

One of our steam cars, the \$1,200 Loco-Surrey, is the best four-passenger Auto on the market for the price. It is attractive and satisfactory in every detail. Here are some of the features. Three-inch tires, Overman pumps, large radius of action, Klinger gauge, Pilot light, strongly constructed throughout, working parts encased.

*Write for full information about the many styles of automobiles which we manufacture*

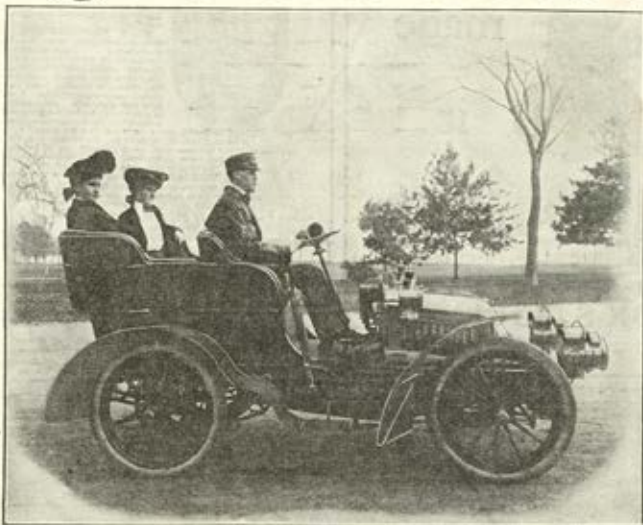
**The Locomobile Co. & STEAM & GASOLINE**  
7 EAST 42d STREET, N. Y.

**BRANCH  
OFFICES**

NEW YORK REPOSITORY, Broadway, corner of 76th Street  
CHICAGO, 1354 Michigan Avenue  
BOSTON, 332 Boylston Street  
PHILADELPHIA, 249 N. Broad Street  
SAN FRANCISCO, 1622 Market Street (The Locomobile Company of the Pacific)  
LONDON, 39 Sussex Place, So. Kensington  
BRIDGEPORT, CONN., Our factory is located here

SEE OUR EXHIBIT AT AUTOMOBILE SHOW, N. Y., JANUARY 17TH TO 24TH

# Locomobile



The 12 H. P. Locomobile (FOUR CYLINDERS)

ONE of our new models is the powerful and substantial gasoline touring car shown above. It has front vertical engine with many novel features, and is so designed that all parts are readily accessible. The car is fast, climbs hills remarkably, and runs as smoothly and quietly as any of our steam locomobiles. Place your order now for spring delivery.

One of our steam cars, the \$1200 Loco-Surrey, is the best four-passenger Auto on the market for the price. It is attractive and satisfactory in every detail. Here are some of the features. Three inch tires, Overman pumps, large radius of action, Klinger gauge, Pilot light, strongly constructed throughout, working parts encased.

*Write for full information about the many styles of automobiles which we manufacture*

The **Locomobile Co.** STEAM GASOLINE  
7 EAST 42d STREET, N. Y.

**BRANCH OFFICES**

NEW YORK REPOSITORY, Broadway, corner of 76th Street  
CHICAGO, 122 1/2 Michigan Avenue  
BOSTON, 15 Berkeley Street  
PHILADELPHIA, 215 N. Broad Street  
SAN FRANCISCO, 1022 Market Street (The Locomobile Company of the Pacific)  
LONDON, 29 Essex Place, St. Kensington  
BRIDGEPORT, CONN. Our factory is located here

SEE OUR EXHIBIT AT AUTOMOBILE SHOW NEW YORK JANUARY 17TH TO 24TH

"Steam"  
Autos



The  
*Locomobile*

Co. of America

7 East 42d Street, New York

"Gasoline"  
Autos



## OUR STEAM CARS FOR 1903

are the result of three years' unequaled experience, for in this time we have placed 5,000 steam Locomobiles in the hands of customers. Strong and durable construction combined with all the latest attachments and labor-saving devices. Many styles, Runabouts, Surreys, Tonneaus, etc. Prices from \$650 upward.

In writing specify if you are an old Locomobile owner



## OUR GASOLINE TOURING CARS

are easily the best built in America. We are building both 9 H. P. and 16 H. P. cars and use the front vertical type of motor exclusively. Our enormous plant at Bridgeport, Conn., enables us to make early Spring deliveries.

**FEATURES:** Throttle on steering wheel giving all speeds on high gear. Valves can be removed and replaced in two minutes. Ignition by dynamo with automatic switch for charging batteries. Absolutely silent engine, remarkable hill-climbing powers. Ask your "mechanical friend" to look it over. All steel chassis allows purchaser to order any desired style of body.

Booklet on request.



16 H. P. Tonneau de Luxe



THE 16 H. P. LOCOMOBILE AT MADISON SQUARE GARDEN.

The body is the true King of the Belgians pattern, in aluminum, painted dark blue and richly upholstered in light-brown leather. It was considered the handsomest automobile at the Show.

## THE *Locomobile* COMPANY OF AMERICA

NEW YORK SALESROOM: Broadway, cor. 76th St.

FACTORY: Bridgeport, Conn.

Branches in Chicago, Boston, Philadelphia, London, and Paris.

## Steam Cars

For a light-weight and medium-weight automobile, nothing can be so good as steam power for all-around work. This is our firm belief after years of experiment. If you live in a hilly country, where the roads are rough, you will need a steam automobile. Our new steam cars for 1903 are better than ever. Write and see how much we give for the price; it will interest you.

## Gasoline Cars

Our new new gasoline cars were the sensation of the recent automobile show in Madison Square Garden. We use the front vertical type of engine exclusively, mounted on a steel chassis, which allows the owner to order any style of body desired. The principal features of the car are absolute quietness and smoothness in operation; speed controlled by throttle on steering wheel; easy accessibility to all working parts. Our plant at Bridgeport is the finest in the country. We can make early Spring deliveries.

ORDER NOW

*Mention the Review of Reviews in writing to advertisers*

The  
 "Steam" *Locomobile* "Gasoline"  
 Autos Autos  
 Co. of America  
 7 East 42d Street, New York

**OUR STEAM CARS FOR 1903**

are the result of three years' unequalled experience, for in this time we have placed 5,000 steam Locomobiles in the hands of customers. Strong and durable construction combined with all the latest attachments and labor-saving devices. Many styles, Runabouts, Surreys, Ton-neaus, etc. Prices from \$650 upward.

In writing specify if you are an old Locomobile owner



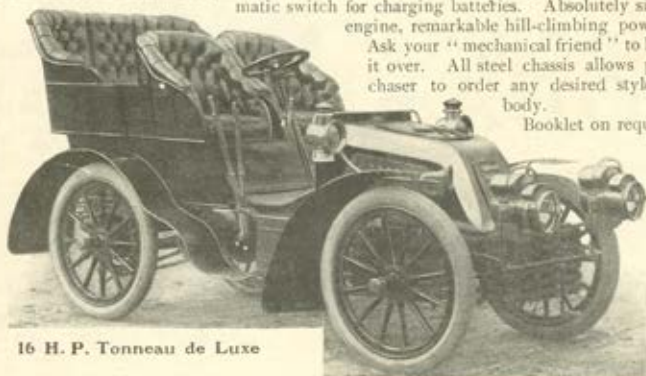
**OUR GASOLINE TOURING CARS**

are **easily the best built in America.** We are building both 9 H. P. and 16 H. P. cars and use the front vertical type of motor exclusively. Our enormous plant at Bridgeport, Conn., enables us to make early Spring deliveries.

**FEATURES:** Throttle on steering wheel giving all speeds on high gear. Valves can be removed and replaced in two minutes. Ignition by dynamo with automatic switch for charging batteries. Absolutely silent engine, remarkable hill-climbing powers.

Ask your "mechanical friend" to look it over. All steel chassis allows purchaser to order any desired style of body.

Booklet on request.



16 H. P. Tonneau de Luxe



*The Locomobile is the best automobile*

*Above is shown the 1903 Stanhope "B" (Steam), a desirable touring car.*

IMPROVEMENTS: Enlarged boiler; indestructible water gauge; 10 H. P. engine, encased and using superheated steam; four band brakes; Victor Steam Pumps. Write for full details. We also manufacture gasoline cars.

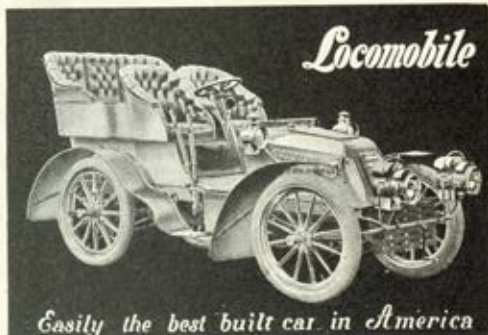
**Our new gasoline Locomobile is "Easily the best built car in America."**

The *Locomobile* Company's Executive Headquarters removed to factory, Bridgeport, Conn.

BRANCHES: 76th Street and Broadway, New York; 13 Berkeley Street, Boston; 249 N. Broad Street, Philadelphia; 1354 Michigan Avenue, Chicago; 39 Sussex Pl., So. Kensington, London.

## OUR GASOLINE TOURING CARS

are fully developed. *No experiment.* For instance, the model herein illustrated has been in regular use for over a year. A prominent customer writes: "*It is almost absolutely noiseless, climbs any hill I have put it at without trouble, is commodious, and I cannot conceive how anything could be better.*" We build 9-H.P. and 16-H.P. cars, using front vertical motor exclusively — the only type to consider. The all-steel chassis permits the purchaser to select any desired type of carriage body. All working parts conveniently placed; substantial construction; material and workmanship of the highest order.



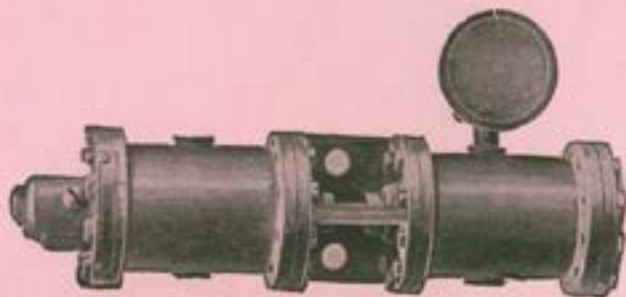
**SOME APPEALING FEATURES.**—Lubrication is automatic, being started or stopped as the spark is switched on or off; governor acts on the mixture and times spark automatically; valves removable and replacable easier and quicker than on any other gasoline car; the spark plugs won't short circuit, and are connected to cables by chains, instead of the usual ever-snapping wires; throttle on steering wheel permits of speeds from 6 to 40 miles per hour on high speed gear—this feature alone places our car far in advance of others, and makes the motor as flexible and easily controlled as a steam car.

Write, or visit any branch office for convincing demonstration on the road.

**The Locomobile Company of America, Head Offices and Factory, Bridgeport, Conn.**

BRANCHES: { 76th St. and Broadway, NEW YORK; 13 Berkeley St., BOSTON; 249 N. Broad St., PHILADELPHIA;  
1354 Michigan Ave., CHICAGO; 39 Sussex Place, South Kensington, LONDON.

# *Locomobile*



## The Victor Pump Always Pumps

### NOTICE

The price of Victor Steam Air and Water Pumps has recently been reduced to \$25 each. If you own a Locomobile, or any other make of steam car, you should equip the same with one or both of these reliable and satisfactory pumps. More in use than all other makes combined.

## The *Locomobile* Company of America

Factory, Bridgeport, Conn.

Branches in New York, Boston, Philadelphia, Chicago, London and Paris

April 1st, Executive Offices moved to our Works at Bridgeport, Conn.

*Copyright 2013 The Virtual Steam Car Museum, Inc.*



HARPER'S MAGAZINE ADVERTISER.



**LOCOSURREY—Price, \$1200**

A strong and speedy car, suitable for city use or touring. Write for information about other 1903 Steam Models. Price from \$650 upwards.

**The *Locomobile* Company of America, Bridgeport, Conn.**

Branches in NEW YORK, BOSTON, PHILADELPHIA, and CHICAGO

## Our Steam Cars ...for 1903

are the result of over four years manufacture, in which time we have made and sold five thousand vehicles. The Locomobile steam car is comfortable and convenient and has won many prizes for speed, reliability and hill climbing in all parts of the world. A customer writes: "I am the owner of one of your earliest steam machines, No. 7, (built in 1899) which still gives good satisfaction."

Prices from

**\$ 6 5 0**

Upwards.

The Stanhope B herein illustrated is only one of many sensible and handsome styles.

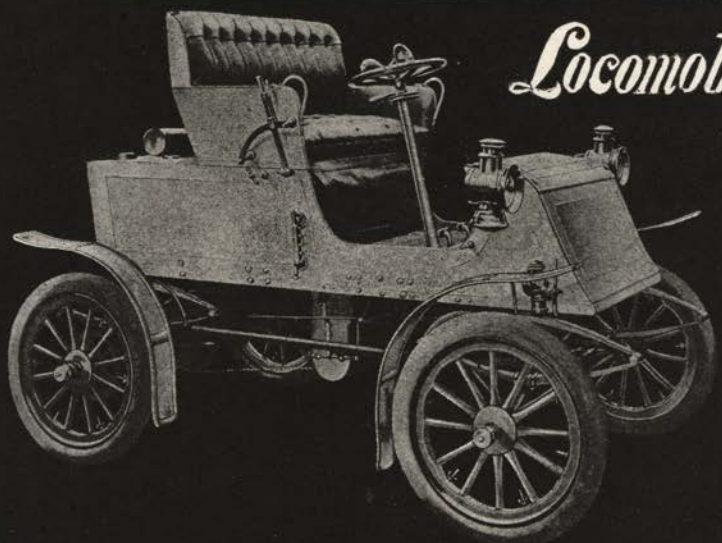


**Conveniences—Special Features:** Indestructible water gauge; Victor steam air pump, obviating all hand pumping and very useful for inflating tires; Victor steam water pump, a reliable auxiliary boiler feed; ejector for convenience in touring; thorough lubrication of engine from one central oil reservoir; positive automatic oil pump for cylinders; forced draught for use in windy weather; superheated steam; solid and substantial construction; fine workmanship and handsome finish throughout.

Write for Catalogue or visit any branch office for demonstration on the road.

**THE Locomobile COMPANY OF AMERICA, General Offices and Factory, BRIDGEPORT, CONN.**

**BRANCHES:** { NEW YORK: Broadway, corner 76th Street.  
 { BOSTON: 15 Berkeley Street.  
 { PHILADELPHIA: 249 North Broad Street.  
 CHICAGO: 1354 Michigan Ave.  
 LONDON: 39 Sussex Place, South Kensington.  
 PARIS: 32 Avenue de la Grande-Armee.  
 Locomobile Co. of the Pacific, 1622 Market Street, San Francisco, Cal.



# *Locomobile*

*The Locomobile is the best automobile*

*Above is shown the 1903 Stanhope "B" (Steam), a desirable touring car.*

IMPROVEMENTS: Enlarged boiler; indestructible water gauge; 10 H. P. engine, encased and using superheated steam; four band brakes; Victor Steam Pumps. Write for full details. We also manufacture gasolene cars.

**Our new gasolene Locomobile is "Easily the best built car in America."**

The **Locomobile** Company's Executive Headquarters removed to factory, Bridgeport, Conn.

BRANCHES: 76th Street and Broadway, New York; 13 Berkeley Street, Boston; 249 N. Broad Street, Philadelphia; 1354 Michigan Avenue, Chicago; 39 Sussex Pl., So. Kensington, London.

The  
 "Steam" *Locomobile* "Gasoline"  
 Autos Autos  
**Co. of America**  
 7 East 42d Street, New York

**OUR STEAM CARS for 1903**

are the result of three years' unequalled experience, for in this time we have placed 5,000 steam Locomobiles in the hands of customers. Strong and durable construction combined with all the latest attachments and labor-saving devices. Many styles, Runabouts, Surreys, Tonneaus, etc. Prices from \$650 upward.

In writing specify if you are an old Locomobile owner



**OUR GASOLINE TOURING CARS**

are easily the best built in America. We are building both 9 H. P. and 16 H. P. cars and use the front vertical type of motor exclusively. Our enormous plant at Bridgeport, Conn., enables us to make early Spring deliveries.

**FEATURES:** Throttle on steering-wheel giving all speeds on high gear. Valves can be removed and replaced in two minutes. Ignition by dynamo with automatic switch for charging batteries. Absolutely silent engine, remarkable hill-climbing powers. Ask your "mechanical friend" to look it over. All steel chassis allows purchaser to order any desired style of body. Booklet on request.



16 H. P. Tonneau de Luxe

# OUR STEAM ... CARS ...



for 1903 are the result of over four years' manufacture, in which time we have made and sold five thousand vehicles. The Locomobile steam car is comfortable and convenient, and has won many prizes for speed, reliability, and hill climbing in all parts of the world. A customer writes:

*"I am the owner of one of your earliest steam machines, No. 7 (built in 1899), which still gives good satisfaction."* Prices from **\$650** upwards. The Dos-a-Dos herein illustrated is only one of many sensible and handsome styles.

**CONVENIENCES AND SPECIAL FEATURES.**—Indestructible water gauge; Victor steam air pump, obviating all hand pumping and very useful for inflating tires; Victor steam water pump, a reliable auxiliary boiler feed; ejector for convenience in touring; thorough lubrication of engine from one central oil reservoir; positive automatic oil pump for cylinders; forced draught for use in windy weather; super-heated steam; solid and substantial construction; fine workmanship and handsome finish throughout.

Write for catalogue or visit any branch office for demonstration on the road.

**The Locomobile Company of America, Head Offices and Factory, Bridgeport, Conn.**

BRANCHES: { 76th St. and Broadway, NEW YORK; 13 Berkeley St., BOSTON; 249 N. Broad St., PHILADELPHIA;  
1354 Michigan Ave., CHICAGO; 39 Sussex Place, South Kensington, LONDON.

# OUR STEAM ... CARS ...

for 1903 are the result of over four years' manufacture, in which time we have made and sold five thousand vehicles. The Locomobile steam car is comfortable and convenient, and has won many prizes for speed, reliability, and hill climbing in all parts of the world. A customer writes: "I am the owner of one of your earliest steam machines, No. 7 (built in 1899), which still gives good satisfaction." Prices from **\$650** upwards. The Dos-a-Dos herein illustrated is only one of many sensible and handsome styles.



**Conveniences and Special Features.**—Indestructible water gauge; Victor steam air pump, obviating all hand pumping and very useful for inflating tires; Victor steam water pump, a reliable auxiliary boiler feed; ejector for convenience in touring; thorough lubrication of engine from one central oil reservoir; positive automatic oil pump for cylinders; forced draught for use in windy weather; super-heated steam; solid and substantial construction; fine workmanship and handsome finish throughout.

Write for catalogue or visit any branch office for demonstration on the road.

The *Locomobile* Company of America, Head Offices and Factory, Bridgeport, Conn.

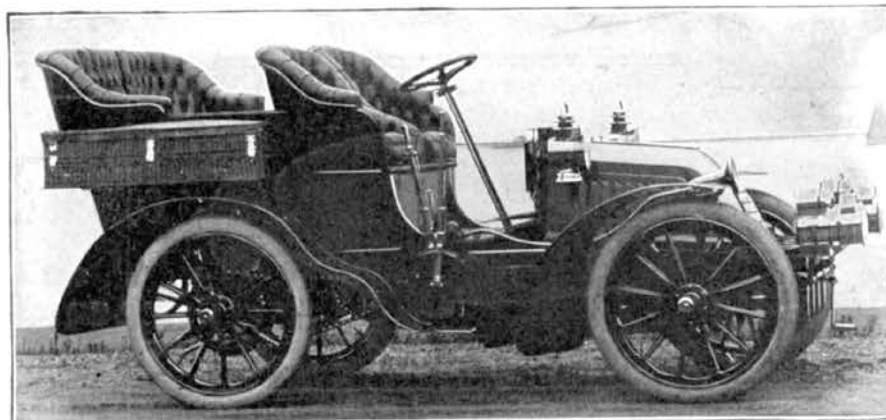
BRANCHES: { 76th St. and Broadway, NEW YORK; 13 Berkeley St., BOSTON; 249 N. Broad St., PHILADELPHIA;  
{ 1354 Michigan Ave., CHICAGO; 39 Sussex Place, South Kensington, LONDON.

# Locomobile

Easily the Best Built Car in America

9 h. p. and 16 h. p. Gasoline Touring Cars.

Front Vertical Motors only used.



A 4-CYLINDER LOCOMOBILE.

**POWER.** Over one brake horse power for every 100 pounds of weight. This means great speed both on roads and on hills. Silent running and vibrationless.

**EASE OF CONTROL.** Multiple cylinder system with throttle on wheel gives perfect control. All speeds from six miles per hour to the maximum, obtained by throttle running on high gear. "It runs like a little sewing machine."

**APPEARANCE.** Very handsome and stylish. All kinds of tonneaus kept on hand ready for quick finishing. Both of wood and aluminum.

**CONVENIENCE.** All mechanical features in accordance with the best and latest practice. All parts easily "get-at-able." All valves removable and replaceable in minimum time. The working machinery being in front, passengers need never be disturbed to make any slight adjustments.

Write to any branch office for photographs, further details, or to arrange for a demonstration. You can not appreciate the many points of superiority of the Locomobile Gasoline Touring Car until you give it a thorough trial.

Order now, so as to get your car in time for the fall touring season.

**The Locomobile Company of America**

MEMBERS OF THE ASSOCIATION OF LICENSED AUTOMOBILE MANUFACTURERS.

NEW YORK: Broadway, corner of 76th St.  
BRIDGEPORT: Factory at Seaside Park.  
BOSTON: 15 Berkeley St.

LONDON: 39 Sussex Pl., South Kensington.  
CHICAGO: 1354 Michigan Ave.  
PHILADELPHIA: 249 N. Broad St.

The Accompanying Picture Shows One of Our 16 H. P. Chassis, Equipped with "King of The Belgians" Aluminum Body.



**Special Features:** Quiet and Smooth Running Qualities. The ease with which the machine can be controlled—this car can be operated varying from four to forty miles per hour on its high speed gear—vertical motors placed in front of the car; hill-climbing abilities, etc. We can equip our Chassis with any style of body which the customer may desire.

"The Locomobile Touring Cars for 1903 . . . are characterized by the greatest simplicity of parts and construction."—*From the Scientific American.*

"It is the smoothest running machine I have ever seen, . . . In my opinion the Locomobile Touring Car is the best on the market, irrespective of price or any other consideration."—*From a Letter from a Customer.*

Our Gasoline Cars are thoroughly developed. No Experiment. Unequaled Manufacturing Facilities. Write or visit any Branch Office for convincing demonstration.

**THE Locomobile COMPANY OF AMERICA**  
Head Offices and Factory, Bridgeport, Conn.

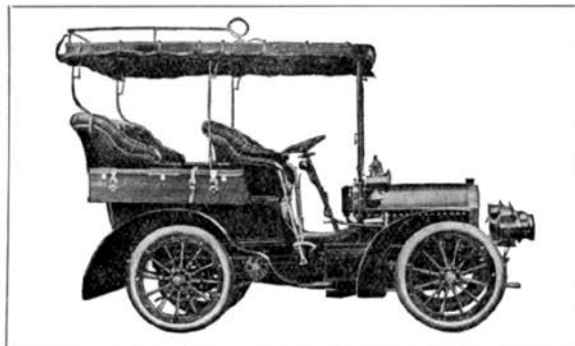
BRANCHES: { 76th St. and Broadway, NEW YORK; 13 Berkeley St., BOSTON; 249 N. Broad St., PHILADELPHIA;  
1354 Michigan Ave., CHICAGO; 39 Sussex Place, South Kensington, LONDON.



# *Locomobile*

# Gasoline Touring Cars

Equal in materials and workmanship to the best Foreign Cars but — BETTER ADAPTED TO AMERICAN CONDITIONS on account of ample clearance, interchangeable parts, etc.



Special attention paid to the selection and testing of materials. Every motor is given a special test under load. Every complete chassis is tested on the road for several hundred miles before finishing.

## A New Four-Cylinder Touring Car with Cellular Radiator

Better place your order now for early spring delivery, many others are doing so.

### The *Locomobile* Company of America, BRIDGEPORT, CONN.

MEMBERS OF THE NATIONAL ASSOCIATION OF LICENSED AUTOMOBILE MANUFACTURERS.

**List of Branch Offices:**

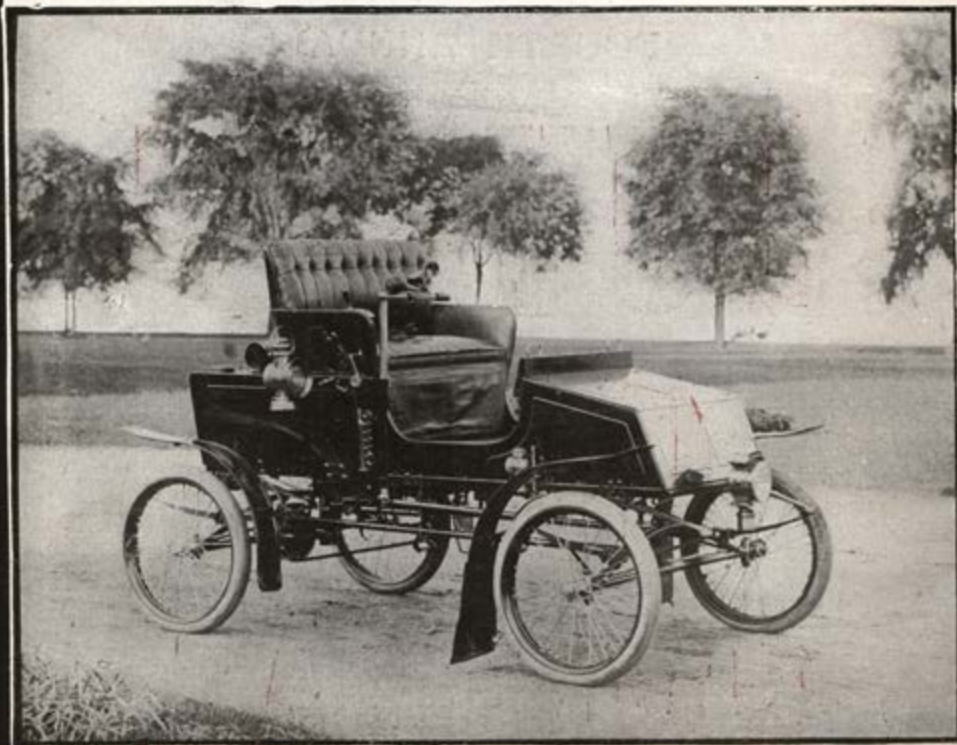
NEW YORK: Broadway, corner of 76th St.  
PHILADELPHIA: 240 N. Broad St.

BRIDGEPORT: Factory at Seaside Park.  
BOSTON: 15 Berkeley St.

CHICAGO: 1354 Michigan Ave.

# Locomobile

## STEAM CARS



### LOCOMOBILE STEAM RUNABOUT

Has gasoline capacity for 125 miles. Extra long wheel base. All conveniences.

Many people early last summer bought gasoline runabouts, but sold them later on to buy Locomobile Steam Cars. If you want a powerful and strongly-constructed runabout, you cannot do better than to purchase a Locomobile. Silent in operation; easy to control; and has wonderful hill-climbing powers.

**Price, \$650 and Upwards**

Write for descriptive booklet showing many styles, and giving list of records and victories.

## The Locomobile Company of America

GENERAL OFFICES, BRIDGEPORT, CONN.

### BRANCH OFFICES:

NEW YORK CITY, Broadway, Corner of 76th Street  
 PHILADELPHIA, 249 North Broad Street  
 BOSTON, 15 Berkeley Street

CHICAGO, 1354 Michigan Avenue  
 BRIDGEPORT, Factory at Seaside Park  
 LONDON, 39 Sussex Place, So. Kensington

Members of the Association of Licensed Automobile Manufacturers