

The Melrose Automobile Co.

OFFER FOR 1907

National Kerosene Burner

National Flash Boiler

National Automatic Cylinder Oiler

Drip Valve on Stanley Cars

Nash Fuel Pump

Mason Engines and Parts

Stanley Carriage Parts

Stanley Super Heater Cutouts

**Every Specialty a First Class Article
and a Good Bargain for the Buyer**

THE MELROSE AUTOMOBILE CO.

153A WEST EMERSON ST.

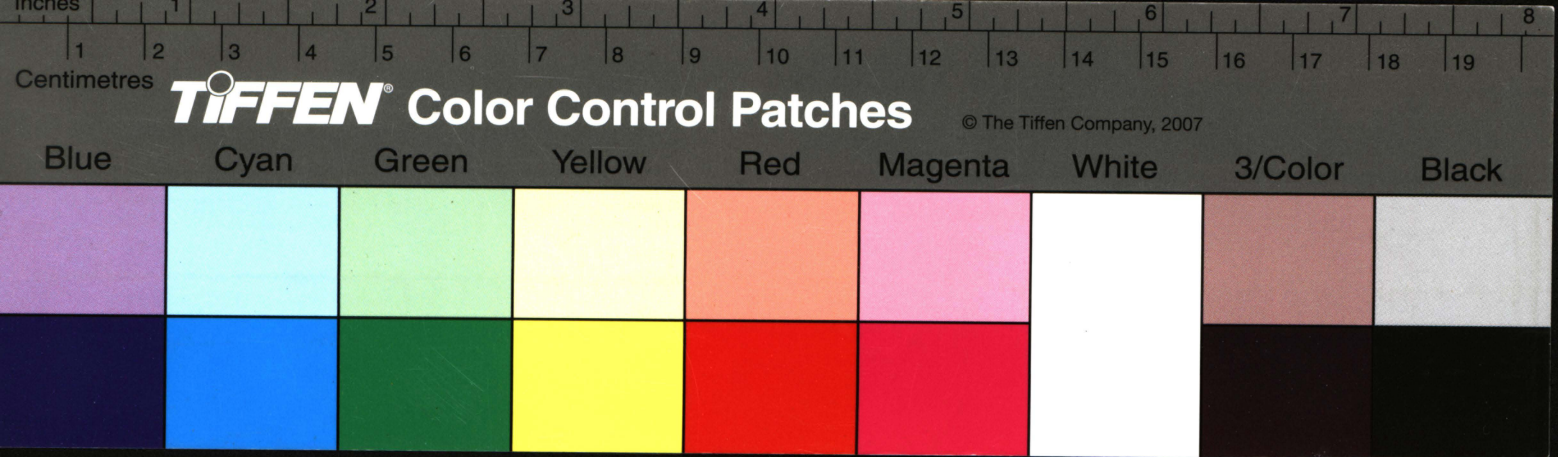
MELROSE, MASS.

Former Location of the National Oil Heating Co.

*Installing
and
Repairing*

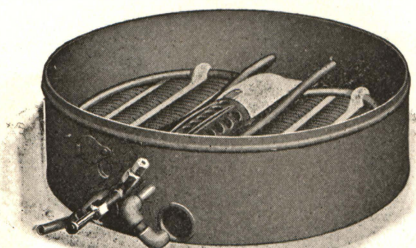
**Bring your Automo-
bile to us.**

*We will
"MAKE
IT GO."*

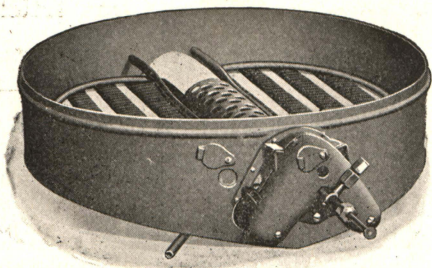


The Burner that Doesn't Cost a Cent

(The saving in fuel pays the cost.)

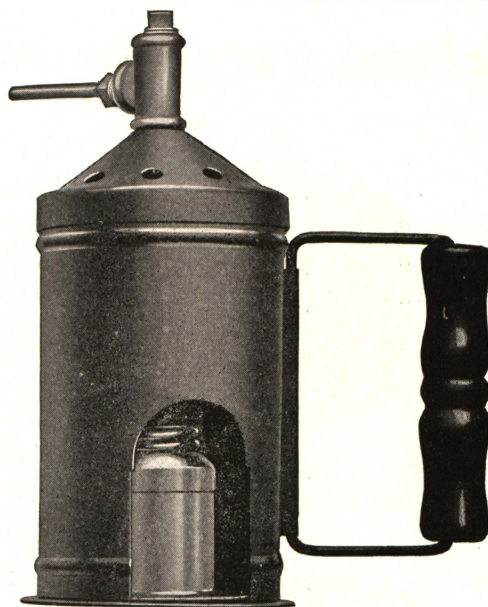


DOUBLE PART BURNER, without Housed Fittings.



DOUBLE PART BURNER, with Housed Fittings.

Send for Descriptive Catalogue.

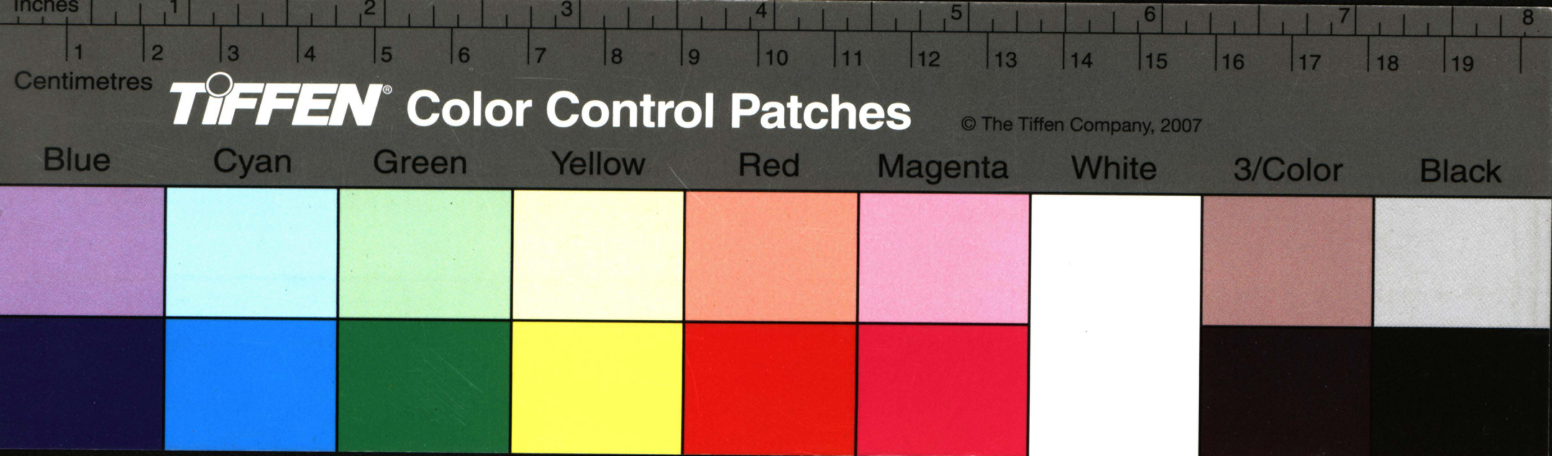


Alcohol Initial Lighters

For Kerosene and Gasolene Burners.

This is a most valuable and convenient aid to the automobile owner. It delivers enough alcohol vapor to the pilot mixing chamber of any kind of burner, to burn for five minutes, which is fully long enough to heat both pilot and main vaporizers red hot, so that when ready to withdraw this lighter, the main fire can be turned on at once. Full directions for use accompany each lighter.

Price,	\$3.50
Price, fitted to the National Kerosene Burner with permanent fittings . . .	5.00



Prices Without Housed Fittings.

14 in. Double	32.50
16 " "	35.00
18 " "	40.00
19 " "	42.50
20 " "	45.00

With Housed Fittings.

14 in.	35.00
16 "	37.50
18 "	42.50
20 "	47.50
23 "	55.00

14 1-2 x 17 1-2	55.00
18 x 18	50.00
15 x 24	55.00

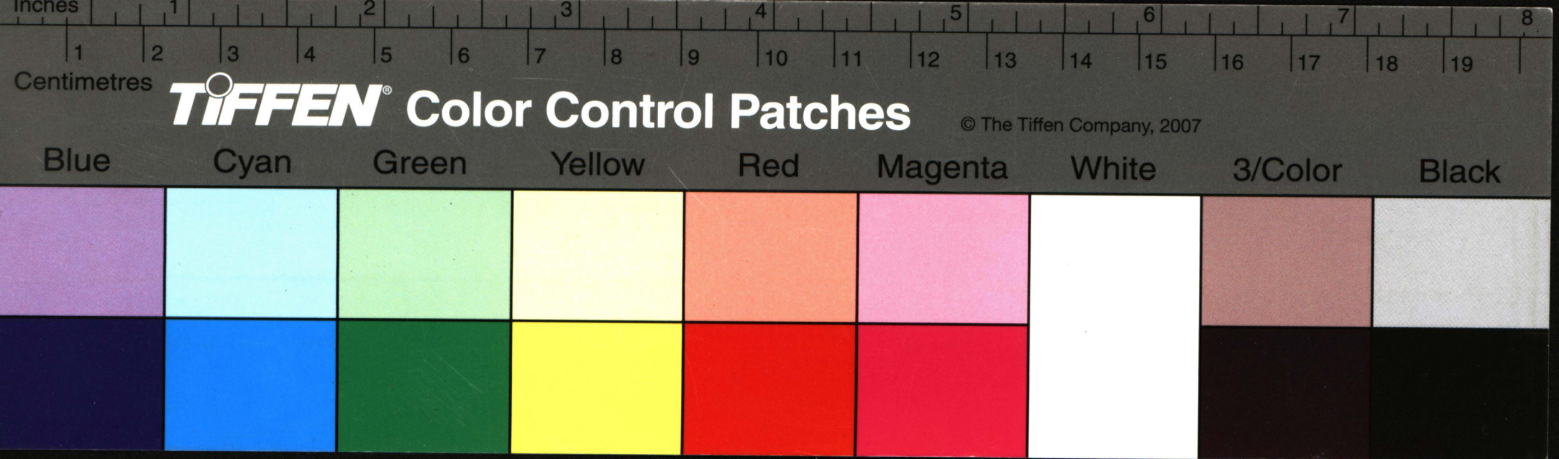
The above are all double mixing chamber 2 gas jets burners.

"National Kerosene Burner" Repair Parts.

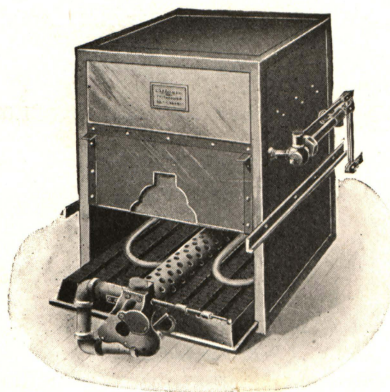
Main Vaporizer	\$1.00
Main Tip20
Gauze, per package of 12 pieces		.50
Pilot Light Vaporizer, complete		1.50
Pilot Light Vaporizer Tube50
" " Tip50
" " Cleaning		
Stem50
Pilot Light Vaporizer Valve50
" " Deflector50
Mixing Tube, state diameter		.50
Case	2.00
Changing Single Part Burner to Double Part	5.00

Stanley Repairs and Stanley Parts.

We have for several years made repairing of Stanley Steam Cars a specialty in connection with installing the National Kerosene Burners. We have handled several hundred of these cars and are familiar with all their details of construction, etc. Send to us for parts and repairs.



"NO WATER LEVEL TO WATCH."



The "National" Flash Boiler.

In the cut the front of case has been removed, showing arrangement of circulation tubes and kerosene burner in position. The burner can be pulled out, like a drawer, for inspection or repair.

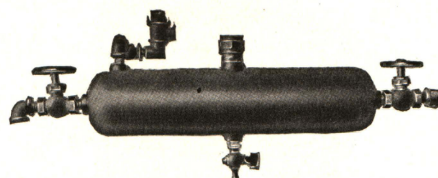
This means an ideal generator plant for a steam carriage; and is being used by us in our new Light Touring Car. No tubes to burn out; forced circulation; feed water and temperature of steam automatically regulated; all tubes or sections easily accessible.

This Boiler used with a Kerosene Burner, just "makes" a Steam Car.

Price, with Burner, \$190.

6

"JUST OIL ENOUGH."



THE

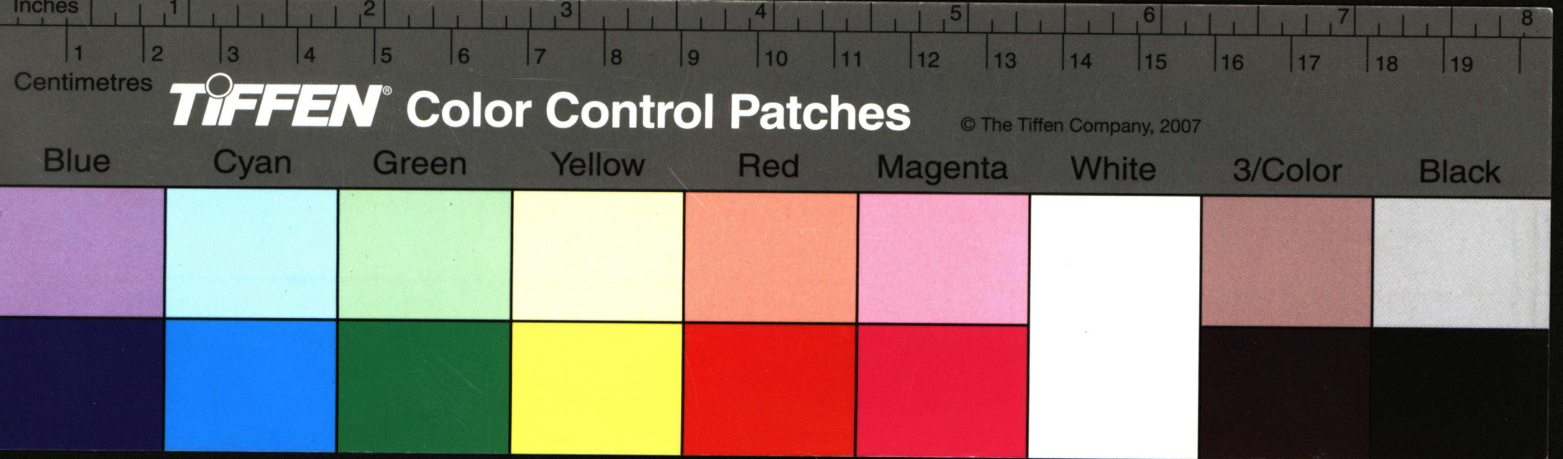
National Automatic Cylinder Oiler

(PATENTED.)

This device is another which solves an old problem of the steam engine operator; that of oiling the cylinders freely without wasting the oil. With all other oilers there is either a feast or a famine—no oil going in—or no oil left in the reservoir. This oiler is operated by a side outlet from the boiler feed line, water being forced in by the pump, drop by drop, through a valve very slightly opened, the water going into the reservoir at the bottom and forcing an equal amount of oil out at the top. By means of a valve at the opposite end, connecting with boiler pressure, the engine may be quickly drenched with oil at any time by hand.

Price,	.	.	.	\$12.50
Installing,	.	.	.	3.00

7



Burners Installed.

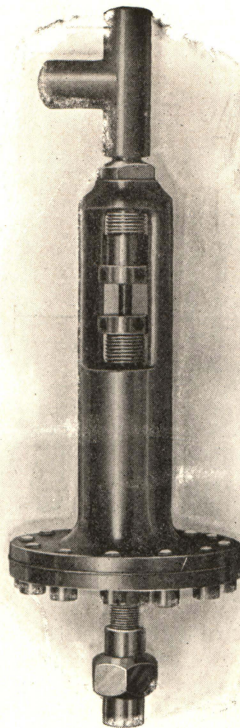
National Kerosene Burners Installed
on Stanley Cars.

FOR						
14 in.	\$45.00
16 in.	57.50
17½ in.	62.50
18 in.	62.50
23 in.	76.00

All tested ready for owner.

We will do the work on 14 in. and 16 in.
in one day, and 17, 18 and 23 in. in 3 days
from time car is left at our factory.

Mason Engines and Parts.

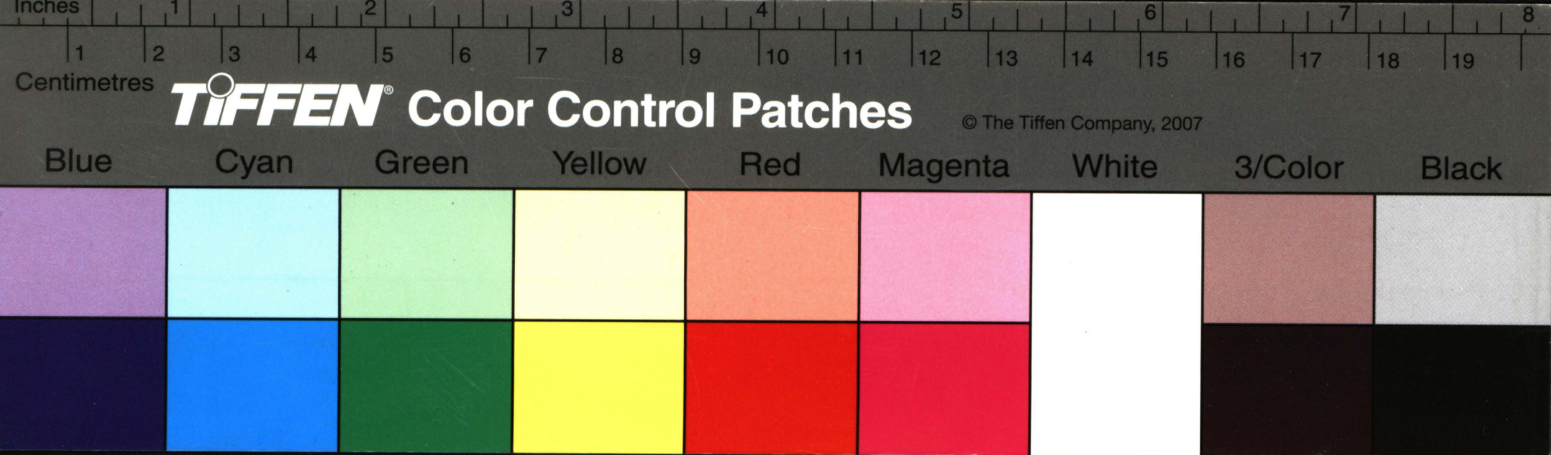


Mason Automatic Regulators.

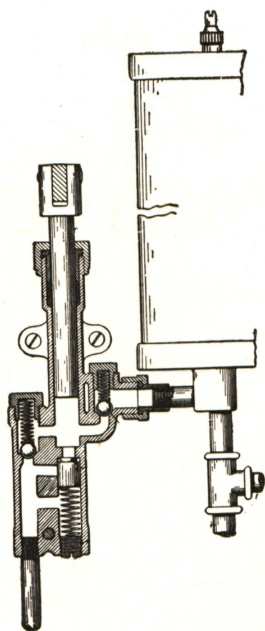
Mason Check Valves, etc.

Mason Fuel and Water Pumps.

Thoroughly reliable. Ask for Complete Catalogue.



The Nash Fuel Pump.



This is one of the best little things ever invented for the steam carriage. Every pump contains its own automatic regulator, and in using this pump a great deal of piping is done away with, which makes its installation a very simple matter. Pumps to any pressure desired and "cuts off" there every time. It is a great relief to the operator to have a pump as reliable as this one.

Price, with Pressure Tank, \$15.00.

10

OWNERS OF STANLEY CARS

What do you do when your Superheater burns out? What can you do but take a tow, or push the car to the barn?

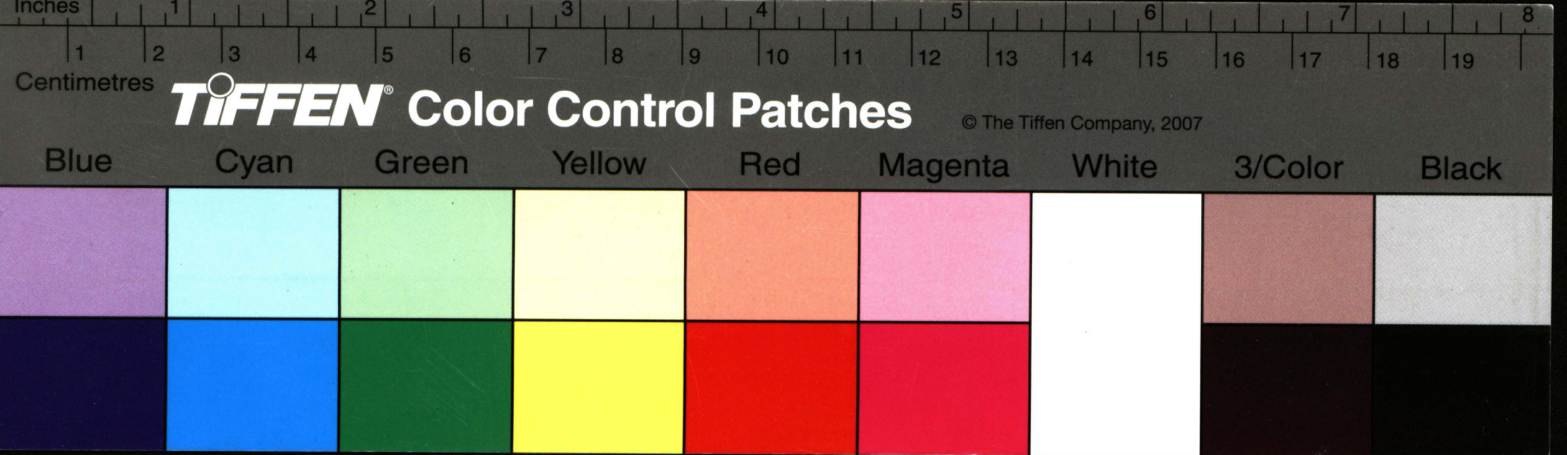
Here is something better.

If you will send your car to our shop, for ten dollars we will BY-PASS your Superheater so you can keep on travelling for any length of time in spite of a burst or burned Superheater.

You wouldn't be without it for \$20.

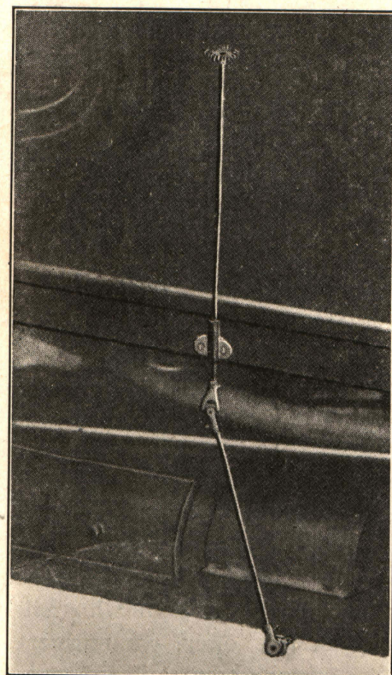
As our shop is not large enough to accommodate at one time all who will take advantage of this offer, we suggest that you write, or telephone "Melrose 351-2" for a date, at once.

11



A Drip Valve on a Stanley Engine

That can be operated from the seat.



Price, \$5.00